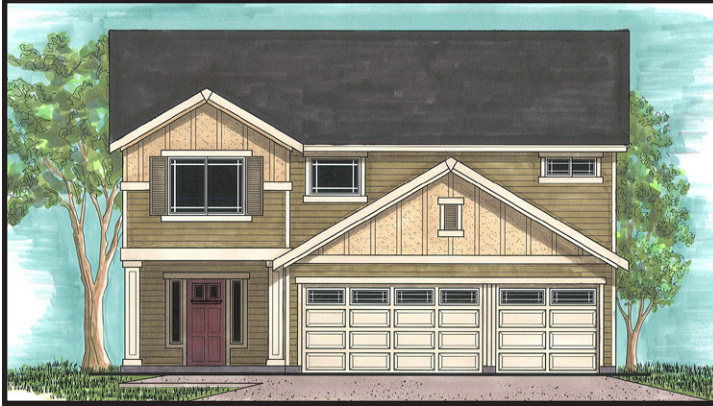


THE ENJA

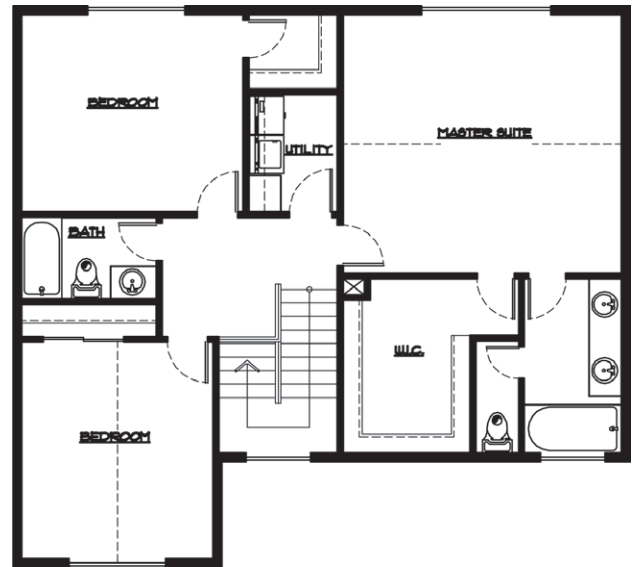
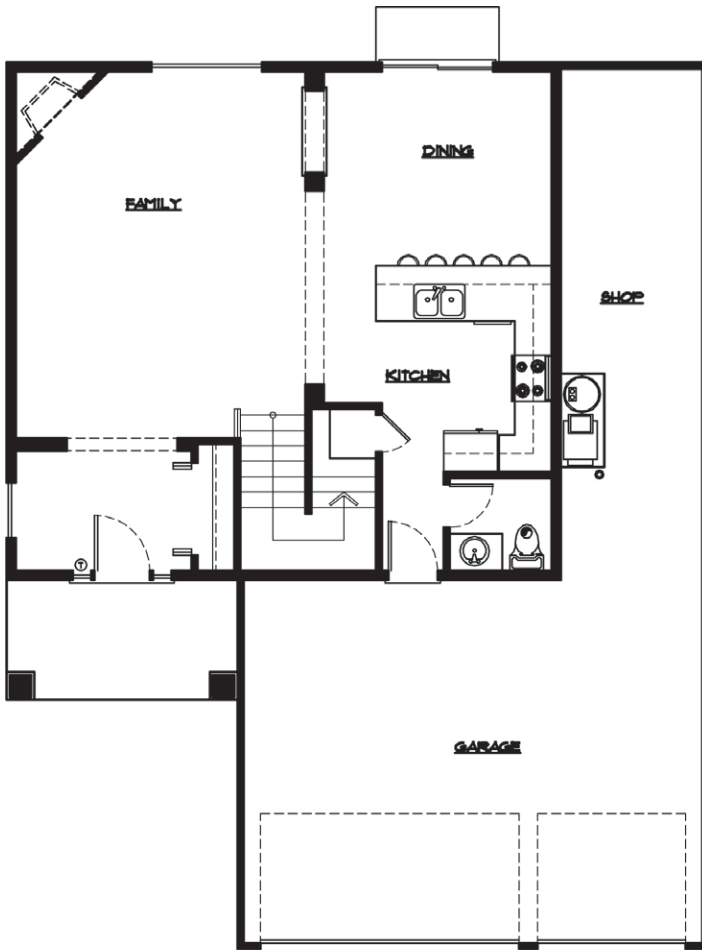


PROMINENT HOMES



THE ENJA FEATURES:

- 1,922 Sq.Ft.
- 3 Bedrooms, 2.5 Bathrooms, 3-Car Garage + Shop
- Gas Fireplace w/ tile surround
- 9 ft. ceilings on the first floor
- Hardwood in front entry
- Kitchen cabinets with 42" uppers
- Tile counters & tile backsplash
- Master suite with 5 piece bath, with tile decor
- Front & side landscaping
- 10x12' deck with steps



John L. Scott
PUYALLUP / CANYON ROAD / PCR



Note: Continuing a policy for constant improvement, builder reserves the right to change features, brand names, dimensions, architectural details and designs. This brochure is for illustrative purposes and drawings are not to scale. This is not part of a legal contract. Prices are subject to change without notice.

Call our sales team today!
LESKE • THAIN • WILLIAMS • FUESTON
253.286.3303