

THE SABLE

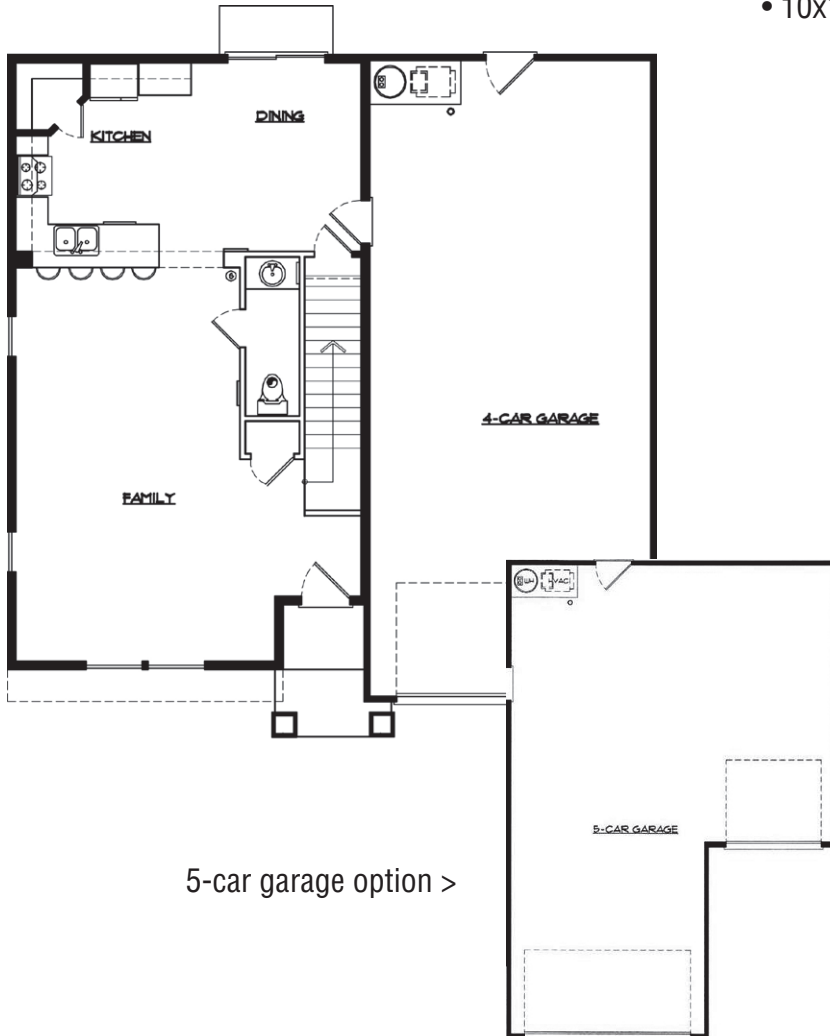


PROMINENT HOMES

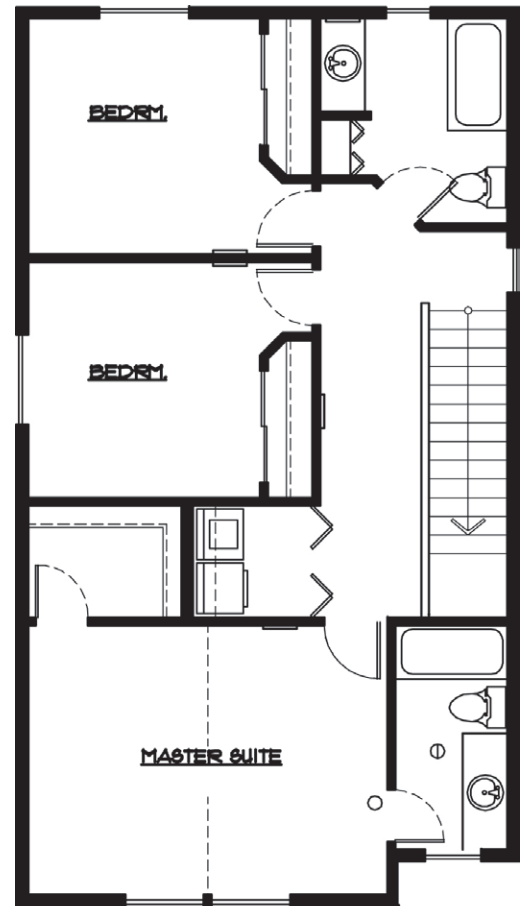


THE SABLE FEATURES:

- 1,701 Sq.Ft.
- 3 Bedrooms, 2.5 Bathrooms, 4 or 5 Car Garage!
- Gas fireplace w/ tile surround
- 9 ft. ceilings on the first floor
- Hardwood in front entry
- Kitchen cabinets with 42" uppers
- Tile counters & tile backsplash
- Master suite with 5 piece bath, with tile decor
- Front & side landscaping
- 10x12' deck with steps



5-car garage option >



John L. Scott
PUYALLUP / CANYON ROAD / PCR



Note: Continuing a policy for constant improvement, builder reserves the right to change features, brand names, dimensions, architectural details and designs. This brochure is for illustrative purposes and drawings are not to scale. This is not part of a legal contract. Prices are subject to change without notice.

Call our sales team today!
LESKE • THAIN • WILLIAMS • FUESTON
253.286.3303